

Tutti Range

D to J Cups

SS17 

   Beautiful Bra's for Curvy Girls'

The Birds & the Bees



Inspired by the fresh summer meadow, Tutti Rouge's Spring Summer '17 fashion capsule is back with a dainty Tutti Signature Print, bright injections of colour and of course new shapes! Tutti is for any girl who knows a fab fit when she feels it and wants a lingerie wardrobe with something for every occasion..

From the Liliana who is your everyday essential, to the Chloe with her vibrant pop of Chartreuse or maybe the Sukki-2-Style with detachable caging for two looks.

Tutti Rouge is sure to have a style that suits every customer.

New to Tutti Rouge? Be sure to check out our Jessica bra. she's our world exclusive with "Tutti Booster" and "Tutti Super Booster" – allowing ladies added 'Oomph' to their bust when and if they want to – all to compliment those killer curves!

Whether you are looking to add to your Tutti collection or introduce some sass, make sure you have something from the experts in Beautiful Bras for Curvy Girls this season..

Love,

Tutti Rouge
x

P.s. All bras feature fully adjustable straps, 3 hook and eye past a G cup and love heart sliders!

'Beautiful Bras for Curvy Girls'



CHLOE

♥ Long Line
Look

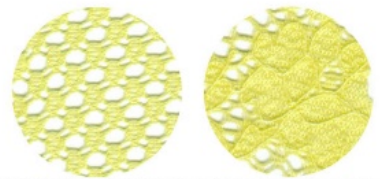
CHLOE

love the look

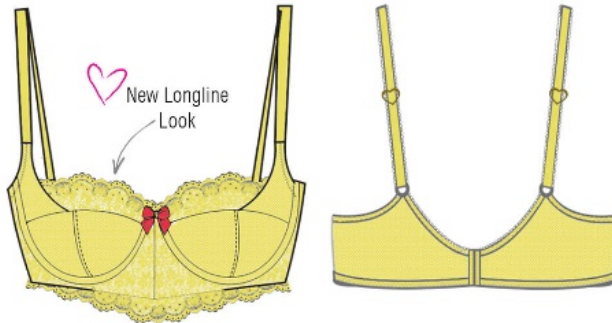


CHLOE

DELIVERY: JANUARY



BRIGHT AND FRESH NEW SHAPE FOR THE SS17 COLLECTION THIS ON TREND SHAPE IS BEAUTIFUL BUT PRACTICAL, WITH A MIX OF FLORAL LACE AND SPORTY MESH THIS LOOK IS BANG ON TREND. WITH A SLIGHTLY LONG LINE LOOK AND HIGH APEXES. BRIGHT PINK CONTRAST BOWS AND DECORATIVE STRAPS.



B2243 - CHLOE FLORAL LACE HALF PADDED BALCONETTE BRA

UK
28"-38"
D-HH CUP

EU
60"-85"
D-HH CUP

US
28"-38"
D-L CUP

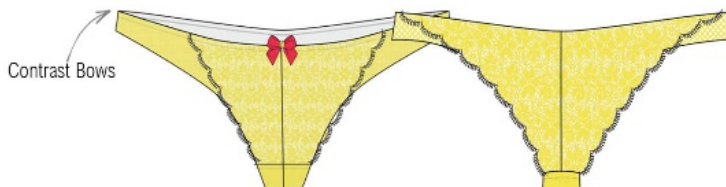


S2243 - CHLOE FLORAL LACE HIGH WAISTED BRIEF

UK
XS-XXL

EU
XS-XXL

US
XS-XXL



T2243 - CHLOE FLORAL LACE TANGA

UK
XS-XXL

EU
XS-XXL

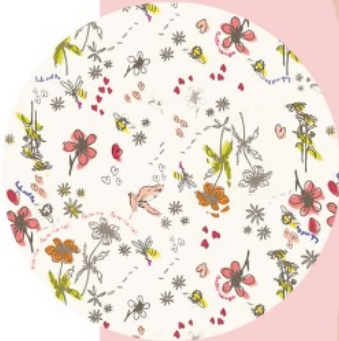
US
XS-XXL



Stiletto

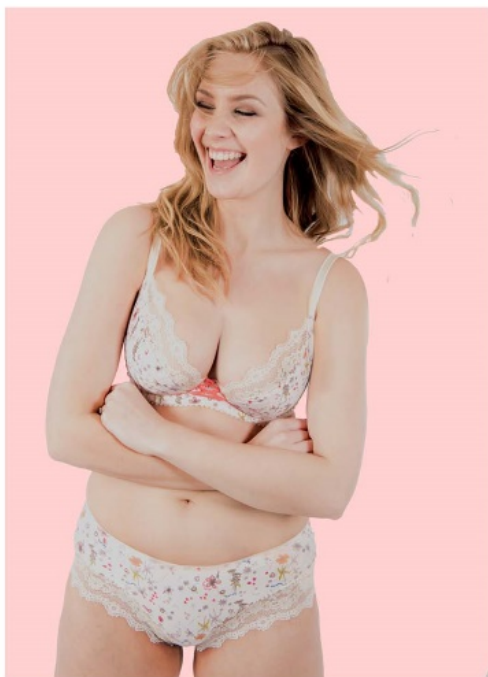
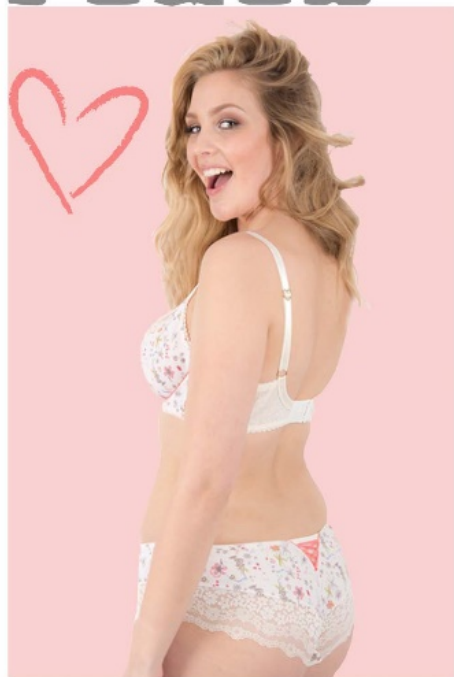
PIXIE

LIFE IS TOO SHORT,
MAKE EVERY HAIR FLIP
FABULOUS



Tutti Signature Print

PIXIE

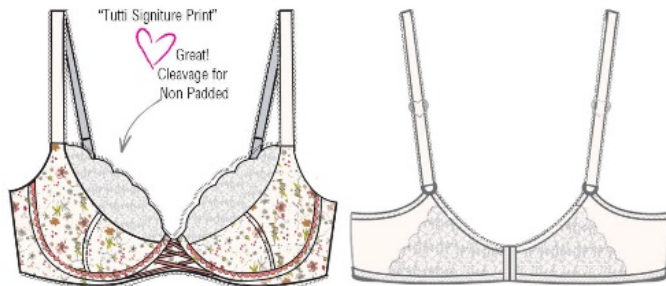


PIXIE



DELIVERY: JANUARY

SCALLOPED EDGE LACE ON TOP CUP WITH PRINTED LOWER CUP, WING AND CRADLE WITH SOLID PEACH SATIN RIBBON MOCK CORSET DETAILING, PICOT TRIM DETAILING IN THE LOWER CUP SEAM WITH SELF COLOURED SMALL PICOT TRIM AT UNDER-BAND AND STRAPS SHORT BRIEF AND BRAZILIAN ALL HAVE DELICATE LACE AND TUTTI'S SIGNATURE PRINT.



B2246 - PIXIE PRINTED SATIN NON PADDED BRA

UK
28"-38"
D-HH CUP

EU
60"-85"
D-HH CUP

US
28"-38"
D-L CUP



ALL OVER ACE
BACK WITH A SMALL
PANEL OF PRINT

U2246 - PIXIE FLORAL LACE MINI BRIEF

UK
XS-XXL

EU
XS-XXL

US
XS-XXL



CORSET
DETAILING

S2246 - PIXIE SATIN & FLORAL LACE SHORT

UK
XS-XXL

EU
XS-XXL

US
XS-XXL



Kitten Heel

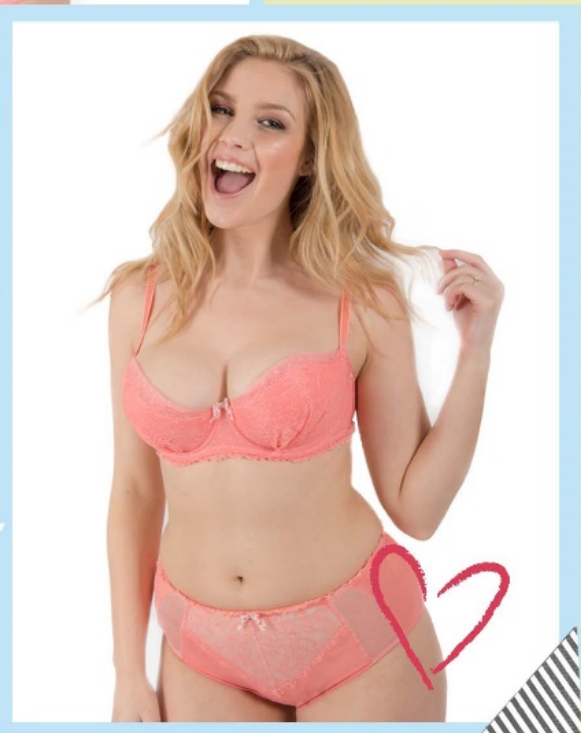


AMELIA

Available up to a HH cup

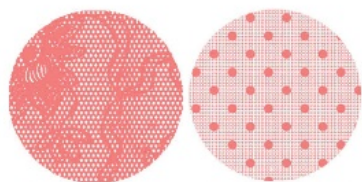
happy
girls are the
prettiest

- Andrew Harnicks

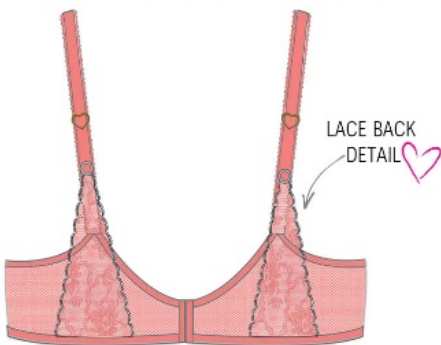
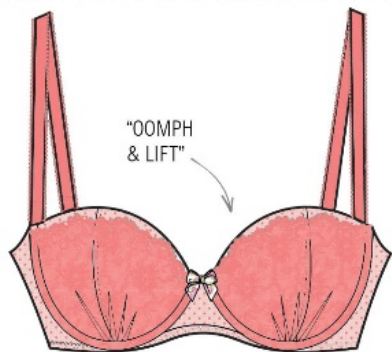


AMELIA

DELIVERY: JANUARY



ANOTHER NEW SHAPE TO THE COLLECTION FOR SS17 A MIX OF BEAUTIFUL SPOT MESH AND FLORAL EYELASH LACE WITH A CUTE FLORAL PRINTED BOW SIT BACK WITH HIGH WAISTED BRIEF AND BRAZILIAN WHICH HAS CUT OUT LACE PANELLING.

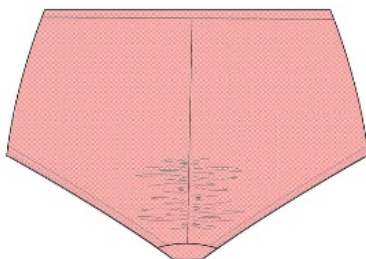


B2244 - AMELIA PADDED DEMI BRA

UK
28"-38"
D-HH CUP

EU
60"-85"
D-HH CUP

US
28"-38"
D-L CUP



S2244 - AMELIA LACE CUT OUT HIGH WAIST BRIEF

UK
XS-XXL

EU
XS-XXL

US
XS-XXL



U2244 - AMELIA LACE CUT OUT BRAZILIAN

UK
XS-XXL

EU
XS-XXL

US
XS-XXL



Stiletto

FOREVER LILIANA

Available up to HH also 40-44D-F



LILIANA

DELIVERY: JANUARY



LILIANA IS ONE OF OUR BEST SELLING STYLES IN CREAM & BLACK. OUR ORIGINAL TUTTI AND STILL A FIRM FAVOURITE WITH OUR CUSTOMERS. THE PADDED LACE BRA ENHANCES A NATURAL CLEAVAGE AND TEAMED WITH THE LACE SHORT OR BRAZILIAN, MAKES THIS THE PERFECT EVERYDAY SET. YOUR LINGERIE ESSENTIAL ARE THE BBF COLOURS AND THE SEASONAL RASPBERRY ADDS A "POP" TO THE

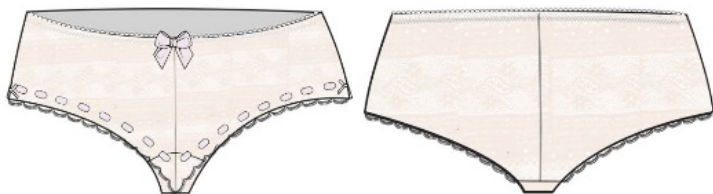


B0721 - LILLIAN HALF PADDED LACE BRA

UK
28"-38"
D-J CUP
40"-44"
D-F CUP

EU
60"-85"
D-J CUP
90"-100"
D-F CUP

US
28"-38"
D-M CUP
40"-44"
D-G CUP



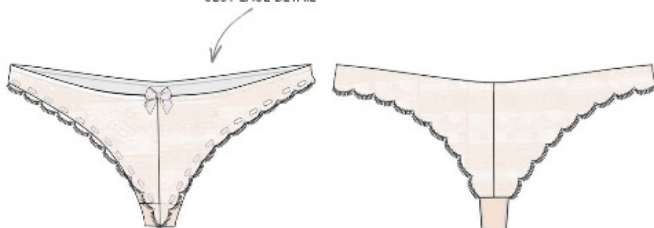
S0721 - LILLIAN LACE SHORT

UK
XS-XXL

EU
XS-XXL

US
XS-XXL

SLOT LACE DETAIL



U0721 - LILLIAN LACE BRAZILIAN

UK
SEXLESS

EU
XS-XXL

US
XS-XXL



Ballet Pump



LEXI

*Shout out to girls who smile
and compliment other girls*



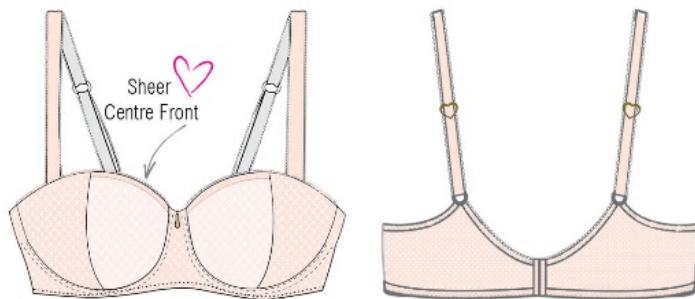
Boozy Brazilian

LEXI

DELIVERY: JANUARY



LEXI FEATURES A CUT OUT MESH FRONT, FINISHED WITH A GOLD DROP DETAIL, LEXI IS A "MUST HAVE" FOR SPRING/SUMMER.
PAIR WITH SUKKI HIGH WAISTED BRIEF OR BOOTY BRAZILIAN

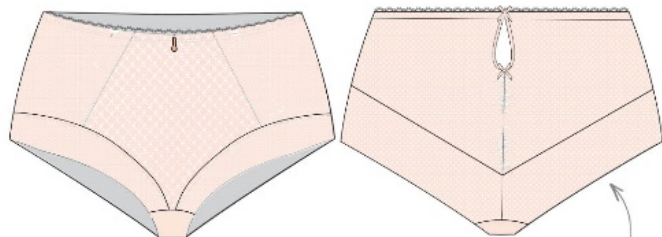


B2245 - LEXI NON PADDED BALCONETTE BRA

UK
28"-38"
D-HH CUP

EU
60"-85"
D-HH CUP

US
28"-38"
D-L CUP



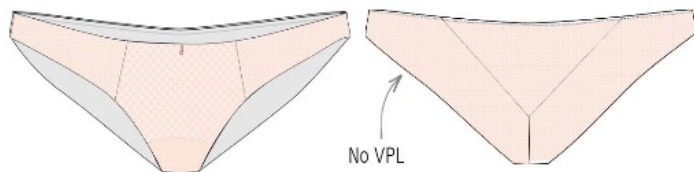
H2242 - SUKKI HIGH WAISTED BRIEF

UK
XS-XXL

EU
XS-XXL

US
XS-XXL

No VPL



U2242 - SUKKI FOLDED BAND BRAZILIAN

UK
XS-XXL

EU
XS-XXL

US
XS-XXL



Ballet Pump



1 BRA 2 LOOKS



SUKKI

Sukki 2 style



SUKKI

DELIVERY: JANUARY



1 BRA 2 LOOKS! SUPER SASSY SUKKI-2-STYLES IS PERFECT WHEN ALL YOU NEED BOTH DAY AND NIGHT IS GLAM, GLAM, GLAM! BY DAY WORN AS A 3 PART PADDED BALCONETTE, THEN VAMP UP THE VOLUME WHEN DUSK FALLS WITH THE DETACHABLE CAGING.

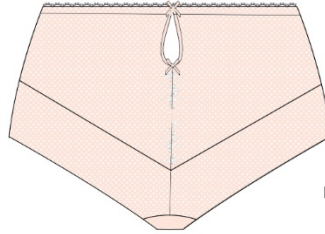


B2242 - SUKKI HALF PADDED BALCONETTE BRA

UK
28"-38"
D-HH CUP

EU
60"-85"
D-HH CUPS

US
28"-38"
D-L CUP



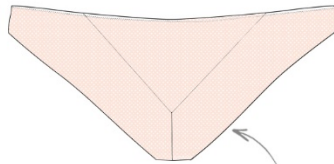
FOLDED BANDS
NO VPL

H2242 - SUKKI HIGH WAISTED BRIEF

UK
XS-XXL

EU
XS-XXL

US
XS-XXL



No VPL

U2242 - SUKKI FOLDED BAND BRAZILIAN

UK
XS-XXL

EU
XS-XXL

US
XS-XXL



Stiletto

JESSICA

SOMETIMES YOU JUST NEED
A LITTLE BOOST



Au Natural



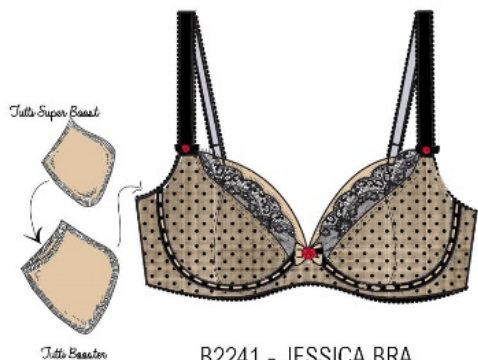
Super Boost

JESSICA



DELIVERY: CONTINUITY IN STOCK

1 BRA 3 LOOKS! THE FAST SELLING JESSICA IS BACK AGAIN FOR ANOTHER SEASON TO HELP YOU WORK, BOOST AND PLAY. A BEAUTIFUL NON-PADDED PLUNGE WITH THE REMOVABLE "TUTTI BOOSTER" & "TUTTI SUPER BOOSTER" CONTINUE TO CREATE HAVOC WITH CLEAVAGE SO GOOD IT SHOULD BE ILLEGAL!



♡
Love
that
boost

B2241 - JESSICA BRA

UK
28"-38"
D-HH CUP

EU
60"-85"
D-HH CUP

US
28"-38"
D-L CUP



U2241 - JESSICA BRAZILIAN BRIEF

UK
XS-XXL

EU
XS-XXL

US
XS-XXL

S2241 - JESSICA DEEP SUSPENDER

UK
XS-XXL

EU
XS-XXL

US
XS-XXL



T2241 - JESSICA THONG

UK
XS-XXL

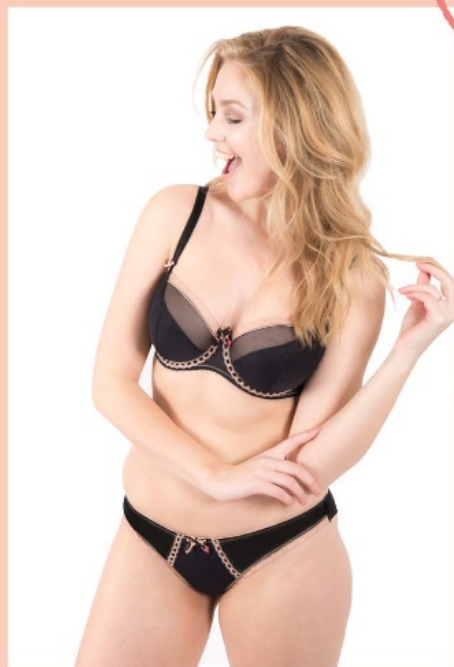
EU
XS-XXL

US
XS-XXL



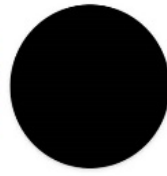
Platform

NICHOLE

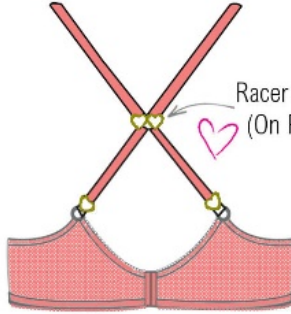


NICHOLE

DELIVERY: JANUARY



OUR FASHIONABLE NICHOLE OF THE SEASON. COMPLEMENTING PERFECTLY THE BBF NICHOLE NOIR/NUDE AND CREME/NOIR. NICHOLE IS ALSO IN AN ANIMAL BLUSH PRINT THIS SEASON WITH NEW BACK DETAIL WITH HEART J HOOK DETAILING



Racer Back Detail
(On Print Only)



B2233 - NICHOLE NON PADDED SEMI-SHEER BRA

UK
28"-38"
D-HH CUP

EU
60"-85"
D-HH CUP

US
28"-38"
D-L CUP

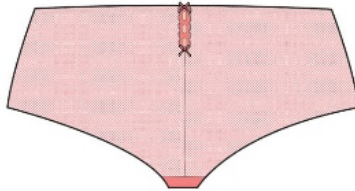


U2233 - NICHOLE SEMI-SHEER BRAZILIAN

UK
XS-XXL

EU
XS-XXL

US
XS-XXL



S2233 - NICHOLE SEMI SHEER SHORT

UK
XS-XXL

EU
XS-XXL

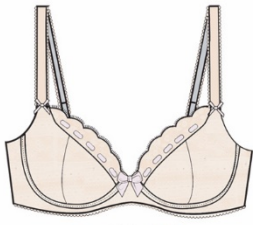
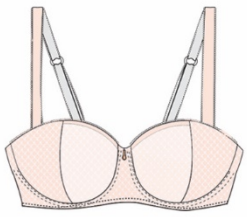
US
XS-XXL



Kitten Heel

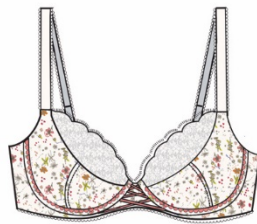
Which Tutti are you?

We have a Tutti Rouge style for every occasion..



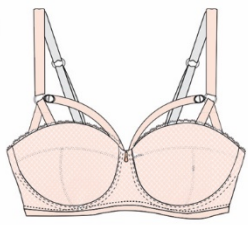
The Ballet Pump of your lingerie drawer.

This run around darling gets you from A-to-B in no time!

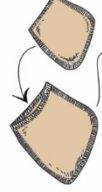


The Kitten Heel of your lingerie drawer.

Fabulous for a midweek date, adds a little sass to your outfit!



Tutti Super Beast



Tutti Beast



The Stiletto of your lingerie drawer.

The perfect party piece, just don't run for the bus!



The Platform of your lingerie drawer.

Keep your heels, head and standards high and ooze confidence.

Keep in touch.....

Distributors

UK

PHILIPPA BRADLEY AGENCIES
Tel: +44 (0)20 7499 4598
emma@pbras.co.uk
lucy@pbras.co.uk
nicky@pbras.co.uk
www.philippabradleyagencies.co.uk

GERMANY

TEXTILAGENTUR CDH
Tel: +49 176 1199 1061
body.dreams@t-online.de
rhuber.dessous@t-online.de

CANADA

KELLY LUCYSHYN SALES
lucyshyn@telusplanet.net

USA

EASTON INTERNATIONAL
Tel: +1 201 391 3492
russ@eastoninternational.com
www.eastoninternational.com

Tutti Rouge

www.tuttirouge.com
t: +44 (0) 116 2168505

Tutti Rouge Ltd,
2 Byron House,
Keats Lane,
Earl Shilton,
Leicestershire,
England,
LE9 7JL



@tuttirouge4u

@tuttirougelingerie

@tuttirouge